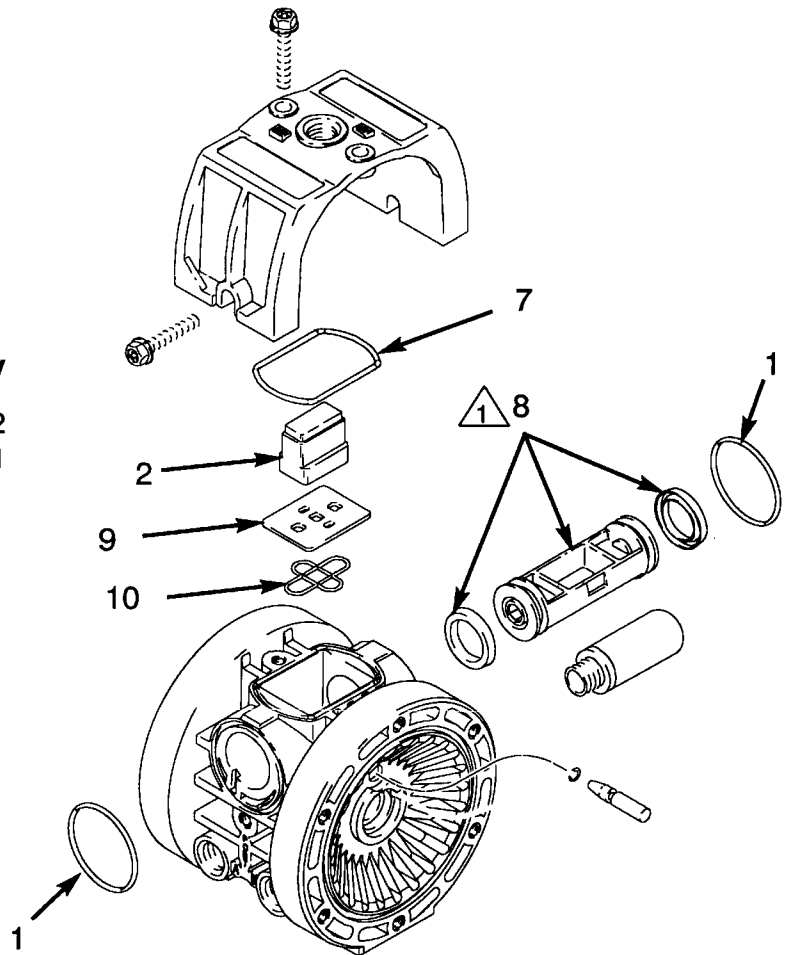
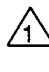


1/4" AIR OPERATED DIAPHRAGM PUMPS

Ref No.	Part No.	Description	Qty
1	115056	PACKING, square ring	2
2	194533	VALVE, block (for pump with air-operated air motor)	1
7	191160	GASKET, molded	1
8	241019	CARRIAGE	1
9	194384	PLATE, valve	1
10	194386	SEAL, plate, valve	1



 Lips of u-cups must face toward each other (toward center of carriage).