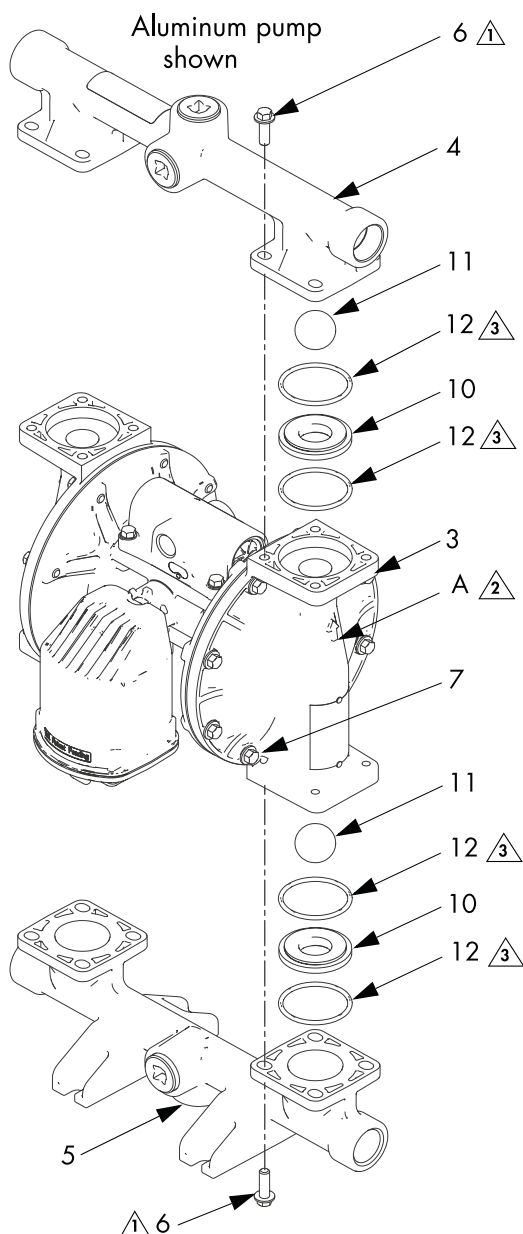


**SEAT KIT #784-92404**  
**CHECK BALL KITS #784-92405 AND #784-92406**



⚠ Torque to 100 in-lb (11.3 N•m)

➡ Arrow (A) must point toward outlet manifold.

⚠ Not used on some models.

**Kit Contents**

**784-92404 SEAT KIT**

QTY	ITEM	DESCRIPTION
4	<b>10</b>	Polypropylene Seats
8	<b>12</b>	PTFE O-Rings

**784-92405 CHECK BALL KIT**

**784-92406 CHECK BALL KIT**

QTY	ITEM	DESCRIPTION
4	<b>11</b>	PTFE Balls
8	<b>12</b>	PTFE O-Rings

**NOTE:** To ensure proper seating of the check balls, always replace the seats and o-rings when replacing the balls. Also, on models with manifold o-rings, replace the o-rings.

**Disassembly**

1. Follow the **Pressure Relief Procedure**. Disconnect all hoses.
2. Remove the pump from its mounting.

**NOTE:** For plastic pumps, use hand tools only until thread-locking adhesive patch releases.

3. Use a 10 mm socket wrench to remove the outlet manifold fasteners (6).
4. Remove the o-rings (12), seats (10), and balls (11).
5. Turn the pump over and remove the inlet manifold. Remove the o-rings (12), seats (10), and balls (11).

**Reassembly**

1. Clean all parts and inspect for wear or damage. Replace parts as needed.
2. Reassemble in the reverse order. Be sure the ball checks (10-12) and manifolds (4, 5) are assembled exactly as shown. The arrows (A) on the fluid covers must point toward the outlet manifold (4).

**Important Safety Instructions**

Read all warnings and instructions in the Operation Manual that was provided with your pump. If you have questions, call Graymills Customer Service at 773-248-6825.