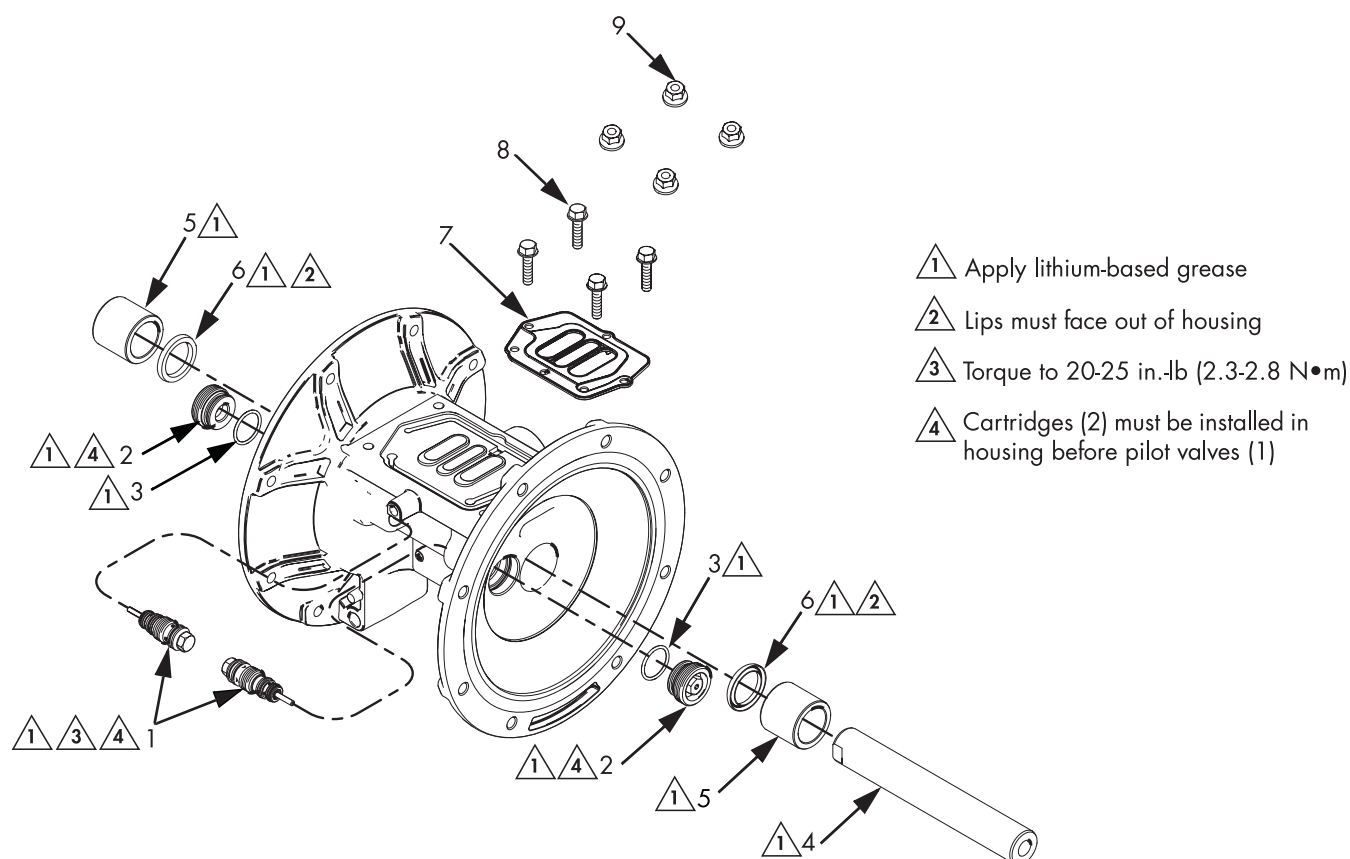


CENTER REBUILD KIT #784-92397



Kit Contents

QTY	ITEM	DESCRIPTION
2	1	Valve, pilot
2	2	Cartridge, pilot
2	3	O-Ring, cartridge
1	4	Shaft, center
2	5	Bearing, center shaft
2	6	U-Cup, center shaft
1	7	Gasket, air valve
4	8	Screws, M6 x 25 (use with aluminum housings)
5	9	Nut (use with plastic housings)
8	NA	Manifold O-Rings (not shown)

Important Safety Instructions

Read all warnings and instructions in the Operation Manual that was provided with your pump. If you have questions, call Graymills Customer Service at 773-248-6825.

See back for more information.

CENTER REBUILD KIT #784-92397

Assembly

NOTE: Apply lithium-based grease whenever instructed to grease.

1. Clean all parts and inspect for wear or damage. Replace parts as needed.
2. If removed, grease and install the new pilot valve cartridges (2) and o-rings (3). Screw in until seated.

NOTE: Cartridges (2) must be installed before pilot valves (1).

3. Grease and install the pilot valves (1). Torque to 20-25 in.-lb (2.3-2.8 N•m). Do not over-torque.
4. Grease and install the diaphragm shaft u-cup packings (6) so the lips face **out** of the housing.
5. If removed, insert the new bearings (5) into the center housing. Use a press or a block and rubber mallet to press-fit the bearing so it is flush with the surface of the center housing.
6. Assemble and install the shaft (4), one of the diaphragm assemblies, and the first fluid cover. See **Reassembly** in the manual or follow directions on the sheet that accompanies all diaphragm kits.
7. To ensure proper seating and extend diaphragm life, attach the second fluid cover with air pressure on the pump.
 - a. Place the tool (supplied with diaphragms) where the air valve gasket (7) normally goes. Arrows (A) must face toward the fluid cover that is already attached.
 - b. Reattach the air valve.

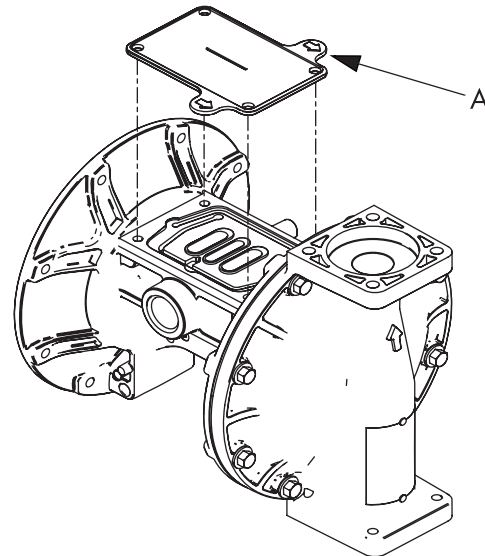


Fig. 1 Fluid cover tool

- c. Supply a minimum of 20 psi (0.14 MPa, 1.4 bar) air pressure to the air valve. Shop air may be used. The diaphragm will shift so the second fluid cover will seat properly. Keep air pressure on until the second fluid cover is attached.
 - d. Attach the second fluid cover (3). See **Torque Instructions** in the manual.
 - e. Remove the air valve and the tool.
8. Align the new air valve gasket (7) on the center housing, then attach the air valve. See **Torque Instructions** in the manual.
 9. Reassemble the ball check valves and manifolds as explained in the manual.