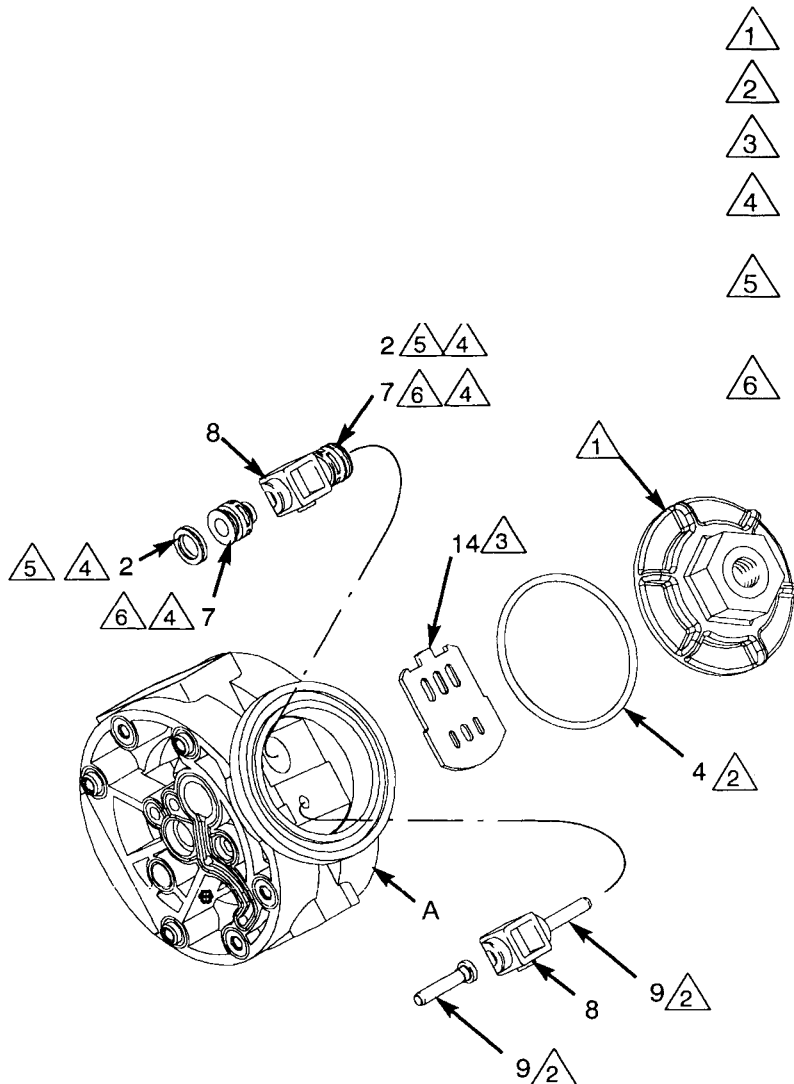


1/2" AIR OPERATED DIAPHRAGM PUMPS



- △ 1 Torque to 80 to 100 in-lb (9.0 to 13.6 N-m).
- △ 2 Apply grease.
- △ 3 Apply grease to lapped face.
- △ 4 Apply grease to bores of center housing (A) before installing.
- △ 5 Seal lips face clip end (the smaller end) of carriage plunger (7).
- △ 6 Install with the clip end (the smaller end) facing toward center of center housing (A).

NOTE: Center housing (A) is shown separated from the air covers, but it is not necessary to remove the air covers for this service. Leave the center housing and air covers assembled for this service.