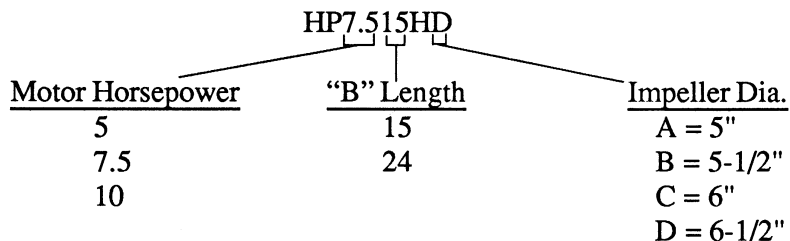


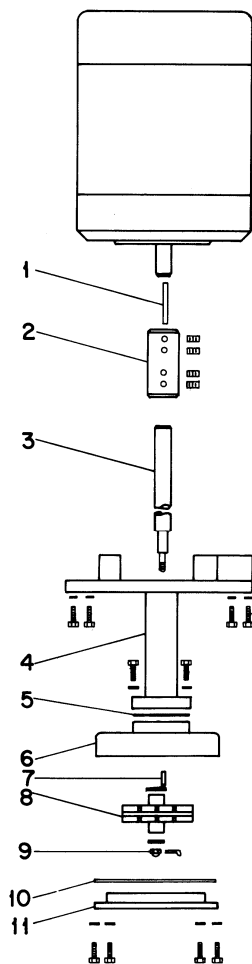
The model number located on the pump contains information necessary to order the proper replacement parts. The following example shows how to interpret this model number.



If a replacement motor is desired, locate the Motor HP in the Model Number and obtain locally.

If an impeller is desired, locate the Impeller Code in the Model Number. Then refer to the Impeller Table below to obtain the part number.

If any other part is desired, locate the Pump Series in the Model Number. Then refer to the proper column in the parts lists. Commonly available nuts, bolts, washers not referenced.



**Exploded View**

REF	PART NO.	DESCRIPTION	15 Series	24 Series
1	743-07173	Key, 5/16 x 5/16" Pump	1	1
2	585-27077-08*	Coupling, 1-3/8"	1	1
3	559-27537-63*	Shaft, 1-3/8" Dia., x 11-1/4"	1	
3	559-27087-63	Shaft, 1-3/8" Dia., x 20-1/4"		1
4	438-27535	Column Assembly 10-19/32"	1	
4	438-27072	Column Assembly 19-19/32"		X
5	660-27091-11	Baffle Plate	1	1
6	519-26547	Volute Housing	1	1
7	597-27089-86	Key, 3/16 x 1-1/2"	1	1
8	See Table	Impeller	1	1
9	755-06957-12	Nut, 1/2-20 NF Castle	1	1
10	744-27090	Gasket, Pump	1	1
11	526-26548	Volute Cover Plate	1	1

\* For AHP515 Models: Coupling, 1-1/8" 585-29484-08; Shaft, 1-1/8" Dia. 559-29482-63.

**Pump Impeller Table**

Impeller Code	Part No.	Description
A	525-27081-74	Impeller, 5" Dia
B	525-27080-74	Impeller, 5-1/2" Dia
C	525-27079-74	Impeller, 6" Dia
D	525-27078-74	Impeller, 6-1/2" Dia