

AGITOR PUMPS

Models H2000, H3000 & H4000 Series

Impeller Replacement Instructions

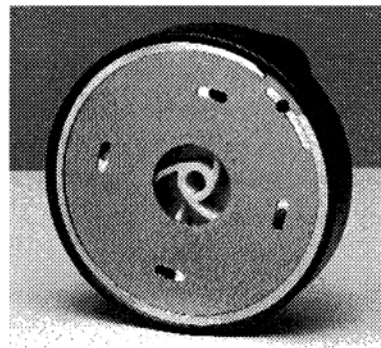
for kits 401-32758, 401-32759, 401-32760

Your kit should contain:

- 1 Spring
- 1 Impeller
- 1 Key
- 6 Shim washers
- 1 Retaining washer
- 1 Mounting screw

Agitor Adjustment

Agitor Series (H2000, H3000, H4000) are equipped with slotted dual cover plates. These can be rotated so slots are closed, partially opened, or fully opened to provide a wide range of in-tank agitation. To adjust agitation, loosen screw, remove snap ring, rotate plates to desired position and re-install snap ring. Be sure snap ring is firmly seated in its groove. Replace star washer and screw.



Graymills Corporation 3705 N. Lincoln Avenue Chicago, IL 60613 (773)248-6825 FAX (773)477-8673 www.graymills.com

AGITOR PUMPS

Models H2000, H3000 & H4000 Series

Impeller Replacement Instructions

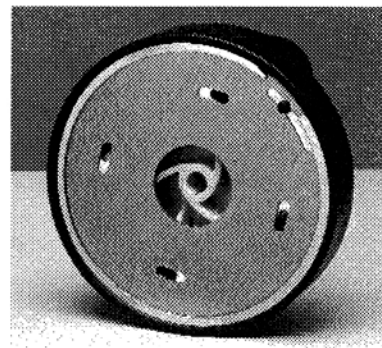
for kits 401-32758, 401-32759, 401-32760

Your kit should contain:

- 1 Spring
- 1 Impeller
- 1 Key
- 6 Shim washers
- 1 Retaining washer
- 1 Mounting screw

Agitor Adjustment

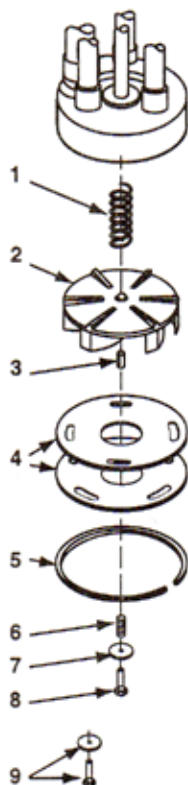
Agitor Series (H2000, H3000, H4000) are equipped with slotted dual cover plates. These can be rotated so slots are closed, partially opened, or fully opened to provide a wide range of in-tank agitation. To adjust agitation, loosen screw, remove snap ring, rotate plates to desired position and re-install snap ring. Be sure snap ring is firmly seated in its groove. Replace star washer and screw.



Graymills Corporation 3705 N. Lincoln Avenue Chicago, IL 60613 (773)248-6825 FAX (773)477-8673 www.graymills.com

Replacing Impeller

- Remove machine screw and washer (9), snap ring (5) and cover plates (4).
- Remove impeller mounting screw (8), retaining washer (7), shim washers (6), impeller (2), and key (3).
- Remove spring (1).
- Snap ring (5) will only seat in its groove in the body if it is clean. Use a screw driver to clean groove.



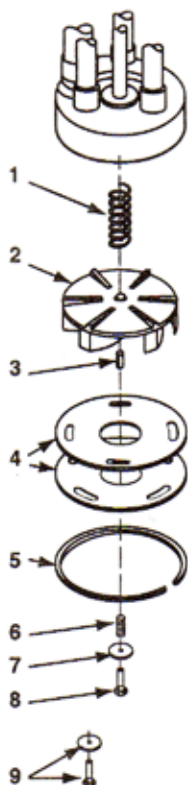
Impeller Installation

- Install spring on shaft. Slide impeller on shaft. Rotate impeller while applying pressure to insure that the impeller turns freely without rubbing against volute. Add key to impeller flush to the end of the shaft.
- Install shim washers into impeller bore until they are flush with the surface of the impeller hub. Install screw and retaining washer, tighten securely.
- Install cover plates and snap ring. Make sure snap ring is firmly seated in its groove. Replace star washer and screw.
- Rotate impeller and check that it does not rub against cover plates.

Graymills Corporation 3705 N. Lincoln Avenue Chicago, IL 60613 (773)248-6825 FAX (773)477-8673 www.graymills.com

Replacing Impeller

- Remove machine screw and washer (9), snap ring (5) and cover plates (4).
- Remove impeller mounting screw (8), retaining washer (7), shim washers (6), impeller (2), and key (3).
- Remove spring (1).
- Snap ring (5) will only seat in its groove in the body if it is clean. Use a screw driver to clean groove.



Impeller Installation

- Install spring on shaft. Slide impeller on shaft. Rotate impeller while applying pressure to insure that the impeller turns freely without rubbing against volute. Add key to impeller flush to the end of the shaft.
- Install shim washers into impeller bore until they are flush with the surface of the impeller hub. Install screw and retaining washer, tighten securely.
- Install cover plates and snap ring. Make sure snap ring is firmly seated in its groove. Replace star washer and screw.
- Rotate impeller and check that it does not rub against cover plates.

Graymills Corporation 3705 N. Lincoln Avenue Chicago, IL 60613 (773)248-6825 FAX (773)477-8673 www.graymills.com